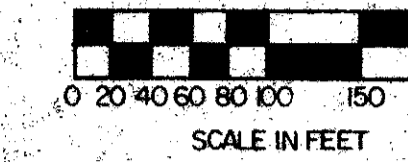
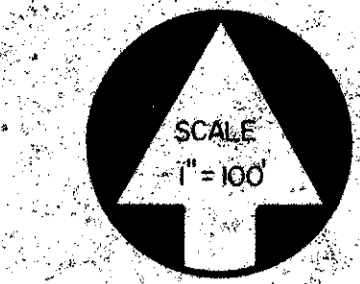


43/52

SUNRISE OF PALM BEACH PLAT NO. 2

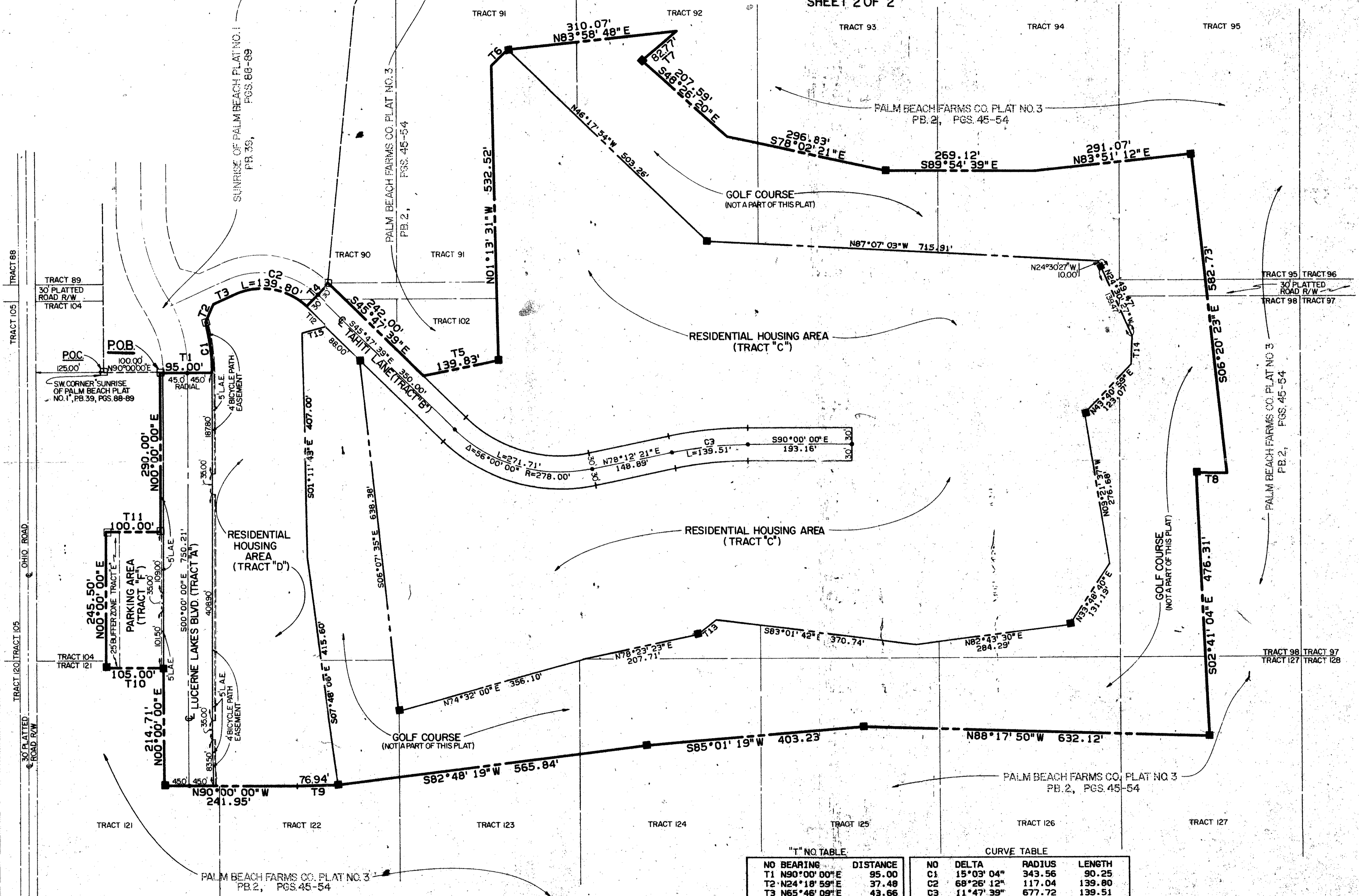
A PORTION OF LUCERNE LAKES PLANNED UNIT DEVELOPMENT
 BEING A REPLAT OF A PORTION OF BLOCK 29 OF PALM BEACH FARMS
 COMPANY PLAT NO. 3, PLAT BOOK 2, AT PAGES 45 THRU 54, PUBLIC
 RECORDS OF PALM BEACH COUNTY, FLORIDA, BEING IN SECTION 28,
 TOWNSHIP 44S, RANGE 42 E, PALM BEACH COUNTY, FLORIDA.

APRIL, 1981
 SHEET 2 OF 2



52

STATE OF FLORIDA
 COUNTY OF PALM BEACH
 THIS PLAT WAS FILED FOR
 RECORD AT
 THIS DAY OF
 APRIL, 1981 AND DULY RECORDED
 IN PLAT BOOK _____ ON PAGES
 _____ AND _____
 JOHN B. DUNKLE, CLERK
 CIRCUIT COURT
 BY: _____ DC.



NO TABLE

NO	BEARING	DISTANCE
T1	N90°00'00"E	95.00
T2	N24°18'59"E	37.48
T3	N65°46'09"E	43.66
T4	N44°12'21"E	60.00
T5	N78°40'16"E	139.83
T6	N45°15'41"E	42.30
T7	S50°01'43"W	82.77
T8	N89°13'31"W	56.20
T9	S88°22'24"W	76.94
T10	N90°00'00"W	105.00
T11	N90°00'00"E	100.00
T12	S45°47'39"E	50.71
T13	N51°35'46"E	41.70
T14	N02°14'45"E	51.04
T15	S74°41'03"W	47.17

CURVE TABLE

NO	DELTA	RADIUS	LENGTH
C1	15°03'04"	343.56	90.25
C2	68°26'12"	117.04	139.80
C3	11°47'39"	677.72	139.51

0277-300

43/52

Meridian Surveying and Mapping Inc. WEST PALM BEACH, FLORIDA

DRAWN	M.B.L.	DATE	APRIL, 1981
CHECKED		SCALE	
DRAWING NO.	79-P-104	SUNRISE OF PALM BEACH PLAT NO. 2	